



GAT MONTHLY MEMBERSHIP PROGRESS REPORT

Results as of: 1/31/2023

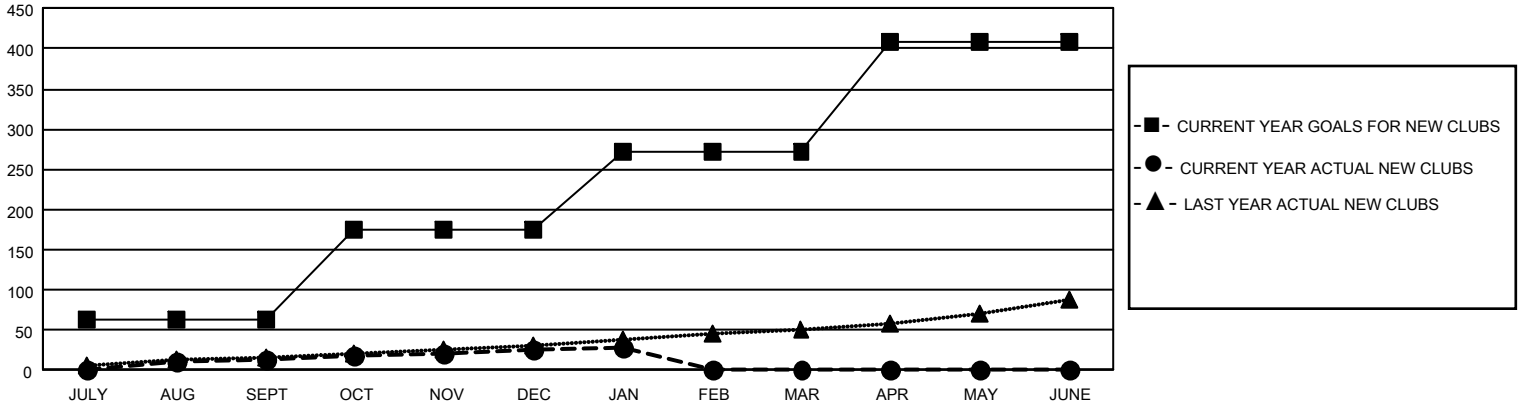
GAT Constitutional Area 1

REPORT DOES NOT INCLUDE CLUBS IN UNDISTRICTED AREAS.

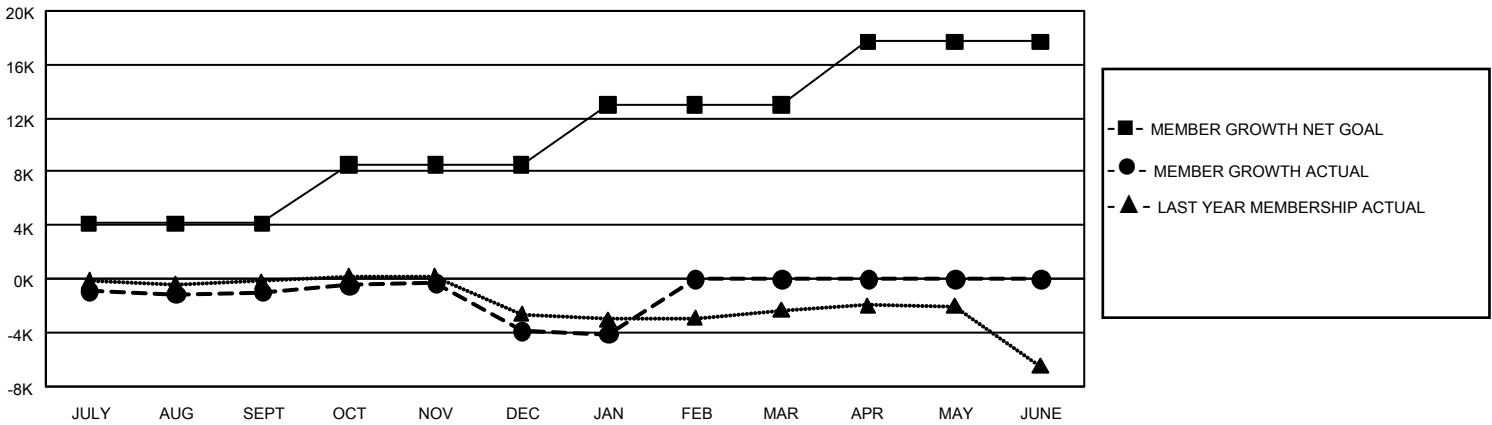
Clubs			
RESULTS FOR 2022-2023			
QUARTER	NEW CLUB GOAL	NEW CLUBS	DROPPED CLUBS
JULY/AUG/SEPT	192	14	64
OCT/NOV/DEC	330	11	111
JAN/FEB/MAR	294	3	30
APR/MAY/JUNE	411	0	0

Members			
RESULTS FOR 2022-2023			
QUARTER	MEMBER GROWTH NET GOAL	MEMBER GROWTH ACTUAL	DROPPED MEMBERS ACTUAL (including transfers)
JULY/AUG/SEPT	4133	7,255	7,310
OCT/NOV/DEC	4409	7,153	9,400
JAN/FEB/MAR	4451	2,873	2,712
APR/MAY/JUNE	4727	0	0

GOALS AND ACTUAL NEW CLUBS CUMULATIVE



GOALS AND ACTUAL MEMBERS CUMULATIVE



DROPPED CLUBS: 205	4,728 CLUBS OF 10,371 ADDED 1 OR MORE NEW MEMBERS	GENDER DISTRIBUTION
DROPPED MEMBERS		MALE 172,746 (64.26%) FEMALE 95,936 (35.69%) NON BINARY 10 (0.00%) PREFER NOT TO ANSWER 121 (0.05%)
DECEASED 2,625	CLICK HERE FOR CUMULATIVE MEMBERSHIP DATA	TOTAL FAMILY UNIT MEMBERS 52,195
CLUB CANCELLED 1,357		FAMILY MEMBERS PAYING HALF DUES 26,859
OTHER 15,442		
TOTAL 19,424		